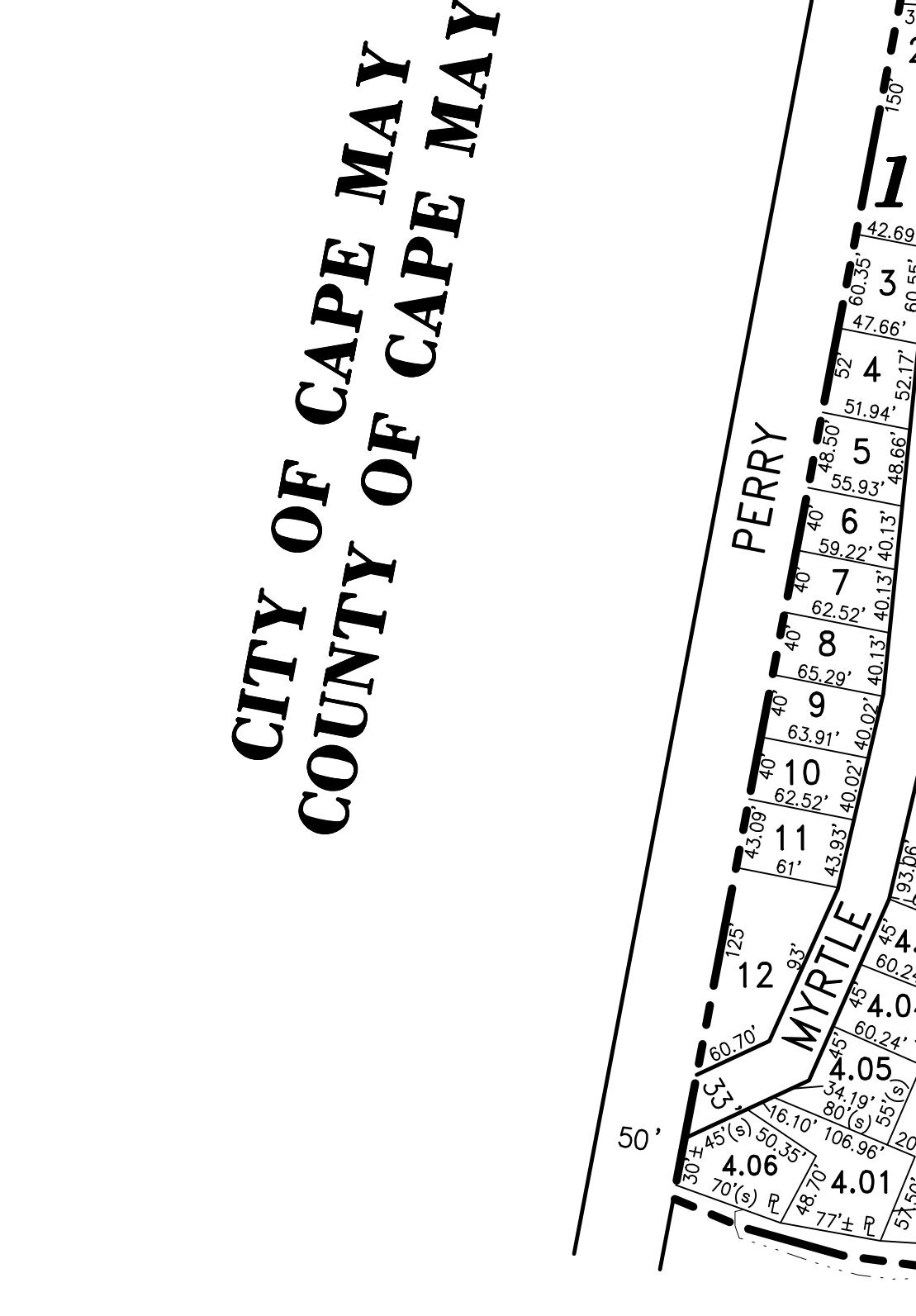
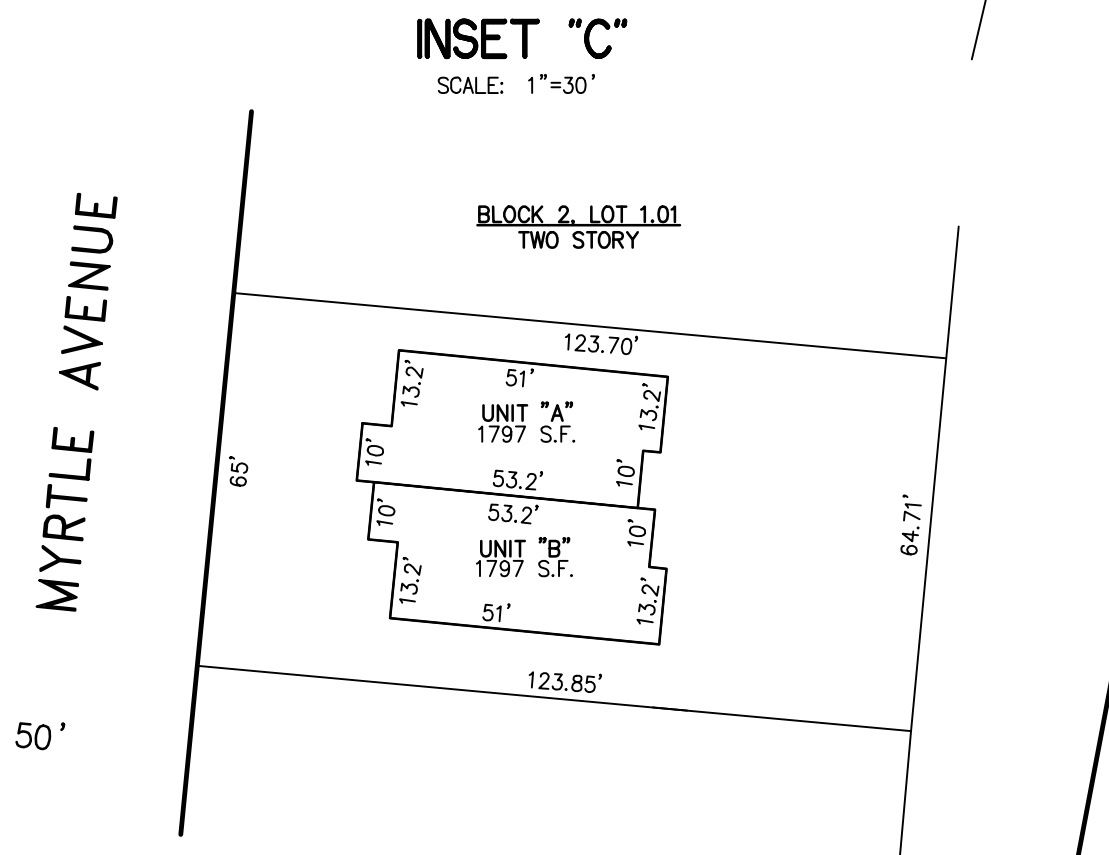
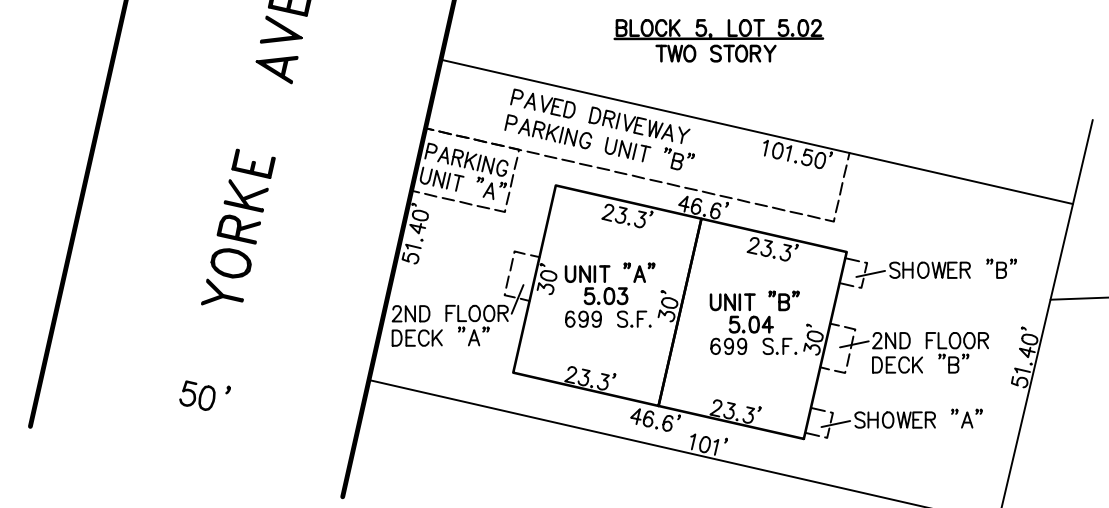
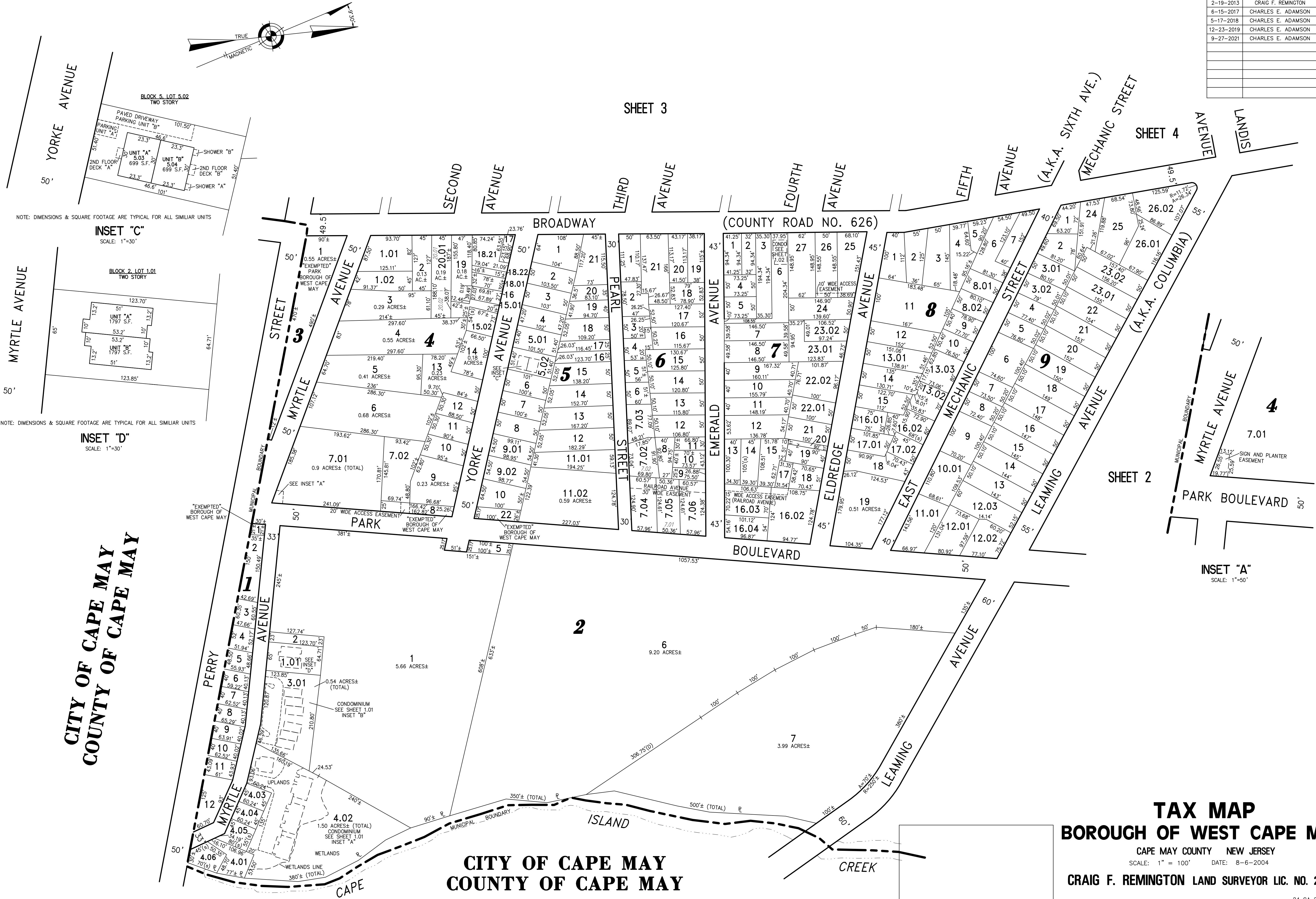


REVISIONS		
2-19-2013	CRAIG F. REMINGTON	23924
6-15-2017	CHARLES E. ADAMSON	42627
5-17-2018	CHARLES E. ADAMSON	42627
12-23-2019	CHARLES E. ADAMSON	42627
9-27-2021	CHARLES E. ADAMSON	42627



**CITY OF CAPE MAY
COUNTY OF CAPE MAY**

**CITY OF CAPE MAY
COUNTY OF CAPE MAY**

TAX MAP
BOROUGH OF WEST CAPE MAY
CAPE MAY COUNTY NEW JERSEY
SCALE: 1" = 100' DATE: 8-6-2004
CRAIG F. REMINGTON LAND SURVEYOR LIC. NO. 23924
REMINGTON, VERNICK & WALBERG ENGINEERS
4907 NEW JERSEY AVENUE, WILDWOOD CITY, N.J. 08260
(609) 522-5500, FAX (609) 522-5333
WEB SITE ADDRESS: WWW.RVW.COM