



A P&H Company

Dear Municipal Official:

Per NJ Board of Public Utilities Regulation N.J.A.C. 14:5-9, we are notifying you of our upcoming line clearance vegetation management activities. Within the next two to three months, Asplundh Tree Expert Company, on behalf of Atlantic City Electric, will be performing tree pruning and removal around our electric distribution facilities in your municipality. This is being done to improve electric service reliability and safety to our customers, including the municipal government, and your residents.

All affected property owners will be notified of our activities prior to work being done, and will have the opportunity to discuss with us any concerns they have prior to work proceeding.

Ownership of affected trees is determined by our easement or public right-of-way rights. However, we wanted to make sure you were aware of our activities, as you may hear from your residents about our work.

Please be assured that our work crews will be doing professional utility pruning and tree removal, utilizing best management practices. We look forward to working with you on these activities.

Sincerely,

Matthew J. Simons

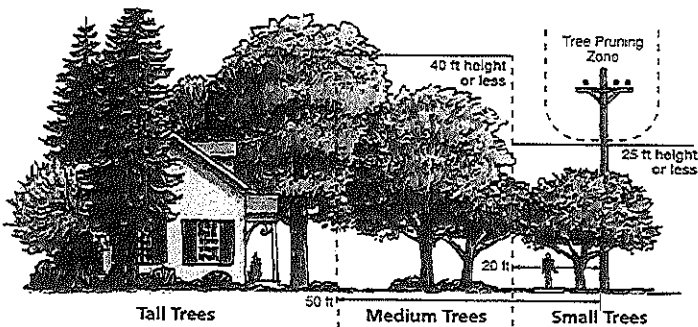
Matthew J. Simons

Atlantic City Electric Vegetation Manager

609-625-6021

Reliable Service and Tree Maintenance

Falling or damaged trees and branches are the leading cause of unscheduled outages. Our tree maintenance program helps keep safe clearance between trees and power lines in your area, using licensed and certified arborists and contract tree pruning experts.



Right Tree, Right Place

If you're planning to plant trees on your property, please consider nearby overhead utility lines as you decide on the type and location of each tree.

- **Tall trees** over 40 feet high, such as maple, sycamore, oak, spruce and pine, should be planted at least 50 feet away from power lines
- **Medium trees** 25 to 40 feet high, such as birch, serviceberry and honey locust, should be planted at least 20 feet away from power lines
- **Small trees** under 25 feet high, such as dogwood, flowering cherry and crabapple, are better for areas close to power lines

Each species grows differently, so think ahead to when it is fully grown. Please contact New Jersey One Call at **1-800-272-1000** before digging.



An Exelon Company

atlanticcityelectric.com

WE VISITED YOUR PROPERTY

As part of our utility tree maintenance work, an arborist checked that your trees have adequate clearance from electric power lines. Here's what they found.

Work required – tree maintenance crews will be coming for:

- Routine scheduled pruning
- Proposed tree removal
- Pruning for service drop (by utility pole)
- Pruning for wire improvements or upgrades
- Clearing prior to customer tree removal (Contact us at the number below 24 hours in advance to schedule a temporary service disconnect before you remove trees)
- URGENT condition – contact us as soon as possible

No work required:

- Visit in response to inspection request
- Reported problem does not involve our equipment
- Reported problem involves cable/phone facilities
- Reported problem can wait for future routine maintenance

Date of notice: _____

Please contact us within 7 days if you have questions.

If you have questions or concerns about this notice, contact the arborist indicated within seven (7) days of the date shown above. If we do not hear from you, we will proceed as planned.

Additional notes:

Caitlin Morrison
Davey Resource Group
609-610-7402

The arborist who visited your property is:

He/She can be reached at: _____



An Exelon Company

Tree Maintenance Questions & Answers

How is tree maintenance scheduled?

Based on our four-year maintenance schedule, certified arborists create a work plan for tree crews after evaluating tree growth around our electric facilities. Key areas include trees and vines that could eventually interfere with electric equipment, as well as dead, dying or hazardous trees that could interfere with power lines and cause outages.

Are industry or legal standards followed?

Our tree maintenance program complies with regulations set by the New Jersey Board of Public Utilities. Tree pruning is performed to the standards and practices outlined by the American National Standards Institute (ANSI), Publication A300, which is followed by nearly all electric utilities in the United States. Our contract tree pruning experts are also required to follow the safety standards set forth in ANSI Z133 and are regulated by the Occupational Safety and Health Administration (OSHA).

How will my tree look after it's pruned?

In addition to pruning overhanging limbs above power lines, we also perform "directional pruning" on branches growing toward power lines in order to guide growth away from power lines and minimize future pruning needs. Wire location, limb size or branch structure may make it necessary to remove limbs back to the tree's trunk.

The figures below show different ways trees can be pruned using directional pruning.

What about tree removal?

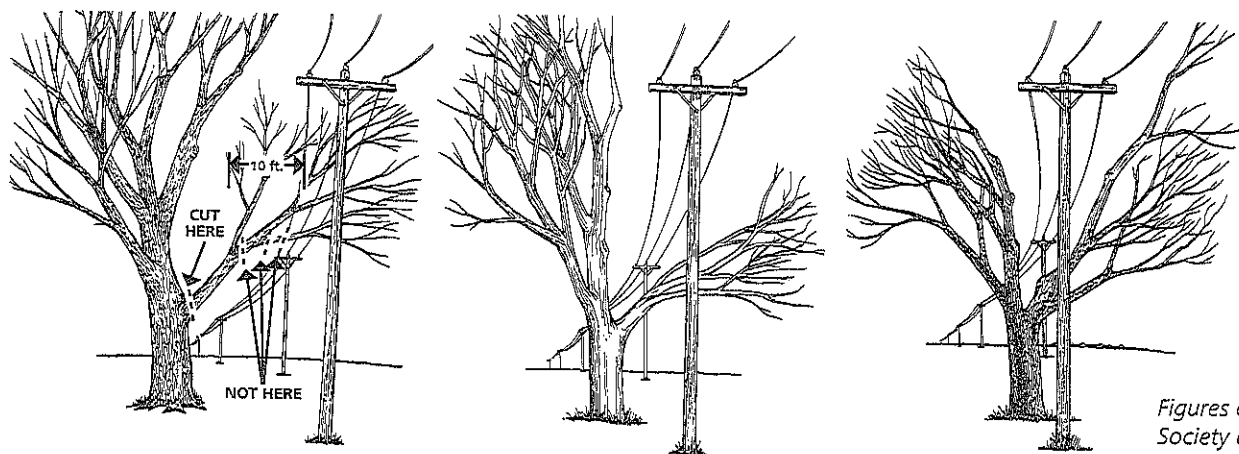
Our work planners may suggest an entire tree be cut down if a large percentage of its crown needs to be pruned, if the tree has no space to grow or if the tree has no acceptable branches to directionally prune back to. Removal might also be required if a tree is near our primary wires and is dying or leaning toward them – or if it is a fast-growing/weak-wooded tree such as a sycamore, silver maple, willow, poplar or pine.

If a tree needs to be removed, we will leave the stump to prevent erosion and soil damage. If you choose to plant replacement trees in the same place, we encourage you to consider a low-growing species such as those described on the back of this notice.

What is Tree Line USA®?

Tree Line USA is a program of the National Arbor Day Foundation and the National Association of State Foresters, recognizing utilities that demonstrate best practices in utility arboriculture. Atlantic City Electric is a proud recipient of this honor, which requires us to ensure proper tree pruning, employee training, tree planting, public education and a tree-based energy conservation program.

For more information about tree maintenance and reliable electric service, contact your Atlantic City Electric arborist or visit us online at atlanticcityelectric.com/treertrimming.



Figures courtesy of the International Society of Arboriculture.